



WM Jean James  
WP Floyd Hall



**April Birthdays**  
25 Yvonne Ryan

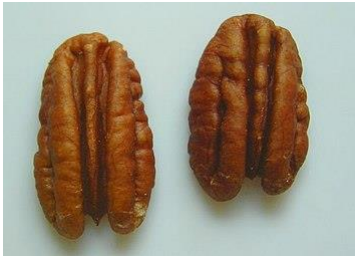


**April Facts/Birthstones**

**Zodiac** - Aries (March 21 - April 19)  
Taurus (April 20 - May 20)  
**Birthstone** - Diamond  
**Flower**- Daisy and Sweet Pea

Please contact the Chapter Secretary  
[tmrc.daylight1145@gmail.com](mailto:tmrc.daylight1145@gmail.com) if you have  
a change of phone number or address.

**OES Chapter meeting this  
month will be on Monday  
the 25<sup>th</sup> at 1:30.**



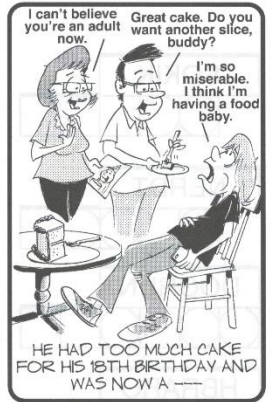
Grab a pencil and piece of  
paper. How many words  
can you make using the  
letters in "Pecan Pie" We  
found 26! (Tough one!)



**JUMBLE**

Unscramble these four Jumbles, one letter  
to each square, to form four ordinary words.

ZALEG  
DUMYD  
PENOLY  
MARLCO



Now arrange the circled letters to form  
the surprise answer, as suggested by the  
above cartoon.

Print answer here " O O O O O O " - O O

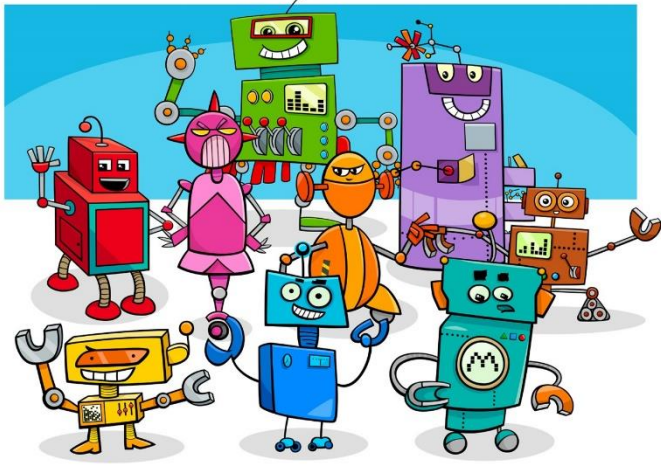
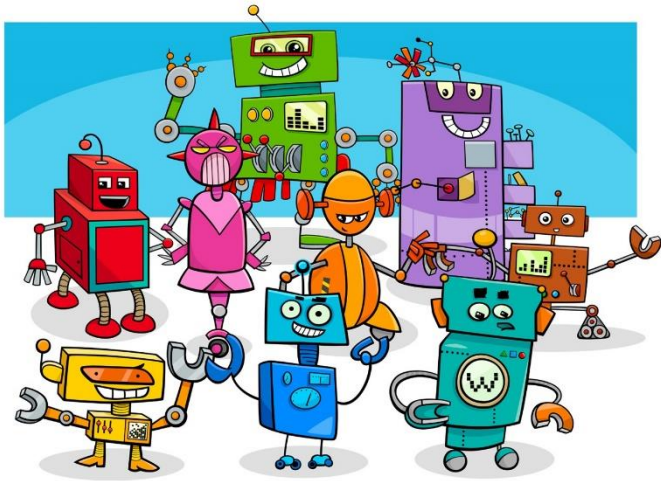
**April is National Pecan Month**

The pecan is a species of hickory native to the southern United States and northern Mexico in the region of the Mississippi River. The tree is cultivated for its seed in the southern United States, primarily in Georgia, New Mexico, Texas, and Mexico, which produces nearly half of the world total. The seed is an edible nut used as a snack and in various recipes, such as praline candy and pecan pie. The pecan, in various aspects, is included in state symbols of Alabama, Arkansas, California, Oklahoma, and Texas.

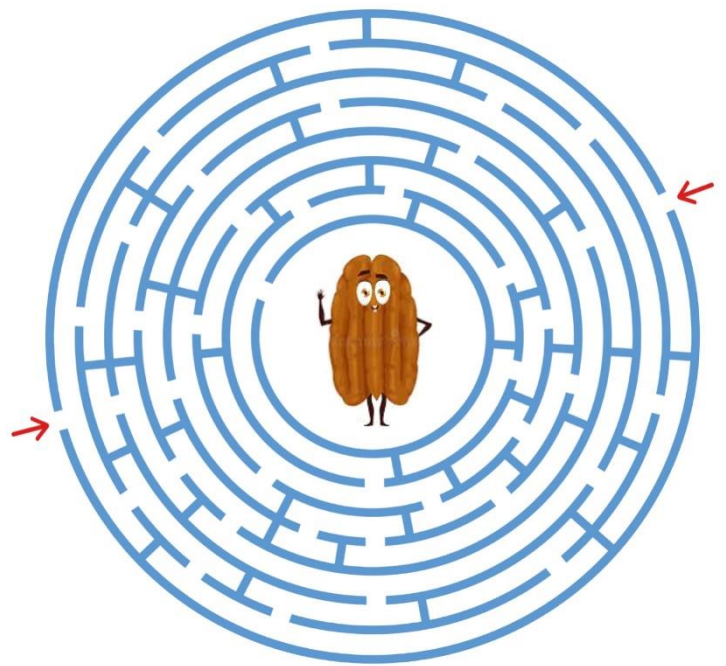
**ABOUT BACON**

A	S	T	L	B	A	D	A	R	E	L	S	Y	I
C	L	H	R	P	O	R	K	B	E	L	L	Y	Y
D	I	S	S	E	L	Z	Z	I	S	E	R	Z	Z
S	C	S	E	M	R	Z	A	W	F	G	A	N	D
R	E	R	U	I	O	S	D	P	R	U	S	R	S
S	D	B	Y	P	D	K	D	H	I	S	B	B	A
C	H	R	E	B	U	E	E	S	E	G	G	S	N
R	U	E	I	O	R	A	U	D	D	R	S	E	D
I	D	A	B	U	R	G	E	R	S	R	T	B	W
S	E	K	C	B	A	C	R	U	N	C	H	Y	I
P	T	F	I	R	S	B	A	L	S	N	R	S	C
Y	L	A	S	R	H	R	E	H	S	A	R	G	H
Z	A	S	M	T	R	S	T	A	S	T	Y	C	B
E	S	T	E	E	R	N	L	B	D	L	L	Y	C

- TASTY
- SUGAR
- EGGS
- SLICED
- BURGERS
- FRIED
- SMOKED
- SLAB
- CRISPY
- RASHER
- SALTED
- BREAKFAST
- CRUNCHY
- BLT
- SANDWICH
- CURED
- SIZZLE
- PORK BELLY



F  
I  
N  
D  
1  
0  
D  
I  
F  
F  
E  
R  
E  
N  
C  
E  
S



Jumble answers: GLAZE, MUDDY, OPENLY, CLAMOR --GROAN UP

(... Pecans continued)

The pecan tree is a large deciduous tree, growing to 66–131 ft in height, rarely to 144 ft. It typically has a spread of 39–75 ft with a trunk up to 6 ft diameter.

A pecan, like the fruit of all other members of the hickory genus, is not truly a nut, but is technically a drupe, a fruit with a single stone or pit, surrounded by a husk.

In 1919, the 36th Texas Legislature made the pecan tree the state tree of Texas; in 2001, the pecan was declared the state's official "health nut", and in 2013, pecan pie was made the state's official pie. The town of San Saba, Texas claims to be "The Pecan Capital of the World" and is the site of the "Mother Tree" (c. 1850) considered to be the source of the state's production through its progeny.



Bacon Trivia

- Bacon is one of the oldest cuts of meat in history; dating back to 1500 BC.
- In the 16th Century, European peasants would proudly display the small amount of bacon they could afford.
- The [Yorkshire](#) and [Tamworth](#) pigs are bred specifically for bacon.
- 70% of all bacon in the US is eaten at breakfast time.
- More than 2 billion pounds of bacon is produced each year in the US.
- Until the first world war, bacon fat was the cooking fat of choice in most US households, when prepackaged pig lard became commonly available.
- BLTs: There's no telling when or where the first bacon, lettuce, and tomato sandwich was eaten, but the combo became very popular following World War II as fresh ingredients became readily available across the nation.

