



WM Jean James  
WP Floyd Hall



# FEBRUARY 2022



**February Birthdays**

- 14 Shannon Blair
- 16 Jessica Lannon
- 18 Delphia Von Heeder
- 20 Don Giles
- 20 Tommy Tomlinson
- 25 Nina Beth Everhard
- 26 Diane Dow



**February symbols**

Birth flowers - violet, the common primrose, and the Iris.  
 Birthstone - amethyst. It symbolizes piety, humility, spiritual wisdom, and sincerity.  
 Zodiac signs: Aquarius (until Feb 20) and Pisces (Feb 21 onwards).

Grab a pencil and piece of paper. How many words can you make using the letters in "at the junction"  
 We found **65!!**



**Super Bowl Sunday**, officially Super Sunday in the NFL, is the day on which the Super Bowl, the National Football League (NFL)'s annual championship game, is played. Sometimes described as an unofficial national holiday, it recently occurred on the first Sunday in February until Super Bowl LV in 2021, which is now considered the final Super Bowl on the first Sunday in February (Sunday, February 7, 2021); starting with Super Bowl LVI in 2022, Super Bowl Sunday is now the second Sunday in February (Sunday, February 13, 2022). Festivities for Super Sunday typically involve groups of people gathering to watch the game.

**JUMBLE**

Unscramble these four Jumbles, one letter to each square, to form four ordinary words.

**ANSPY**

□ □ □ □ □ □ □ □

**ROPAN**

□ □ □ □ □ □ □ □

**TIBESC**

□ □ □ □ □ □ □ □

**HANEEV**

□ □ □ □ □ □ □ □



Print answer here " □ □ □ □ □ - □ □ □ □ □ □ □ □ □ □ "

**SITCOMS**

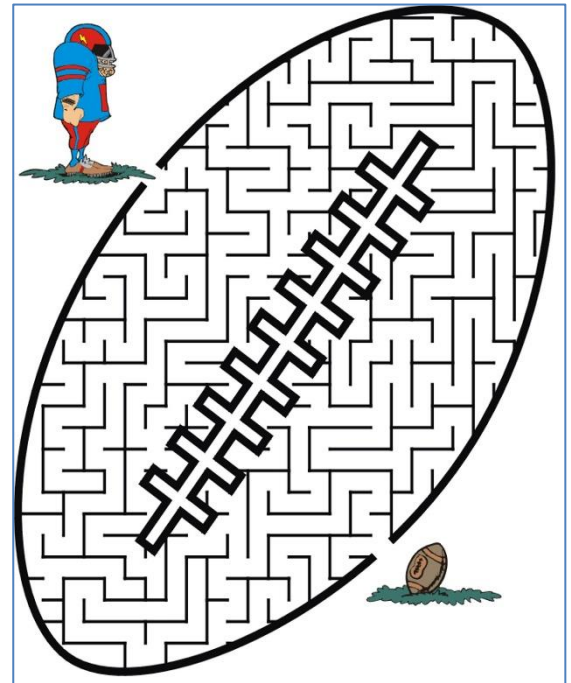
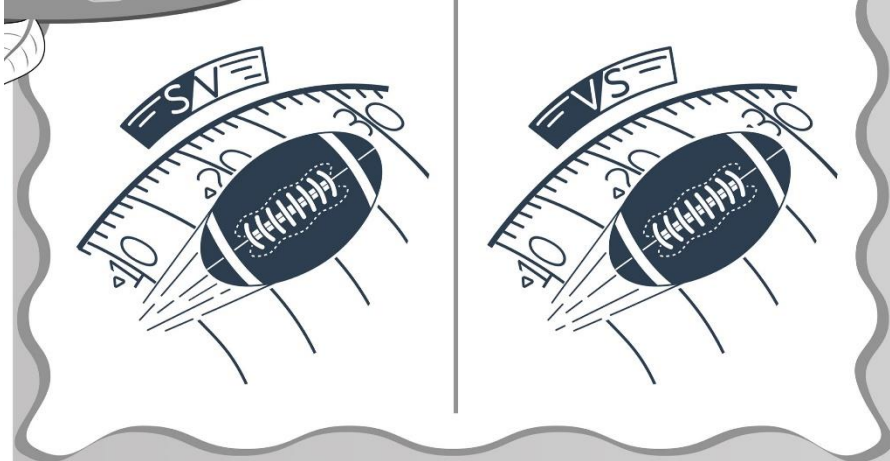
P	C	T	T	A	O	B	E	V	O	L	G	M	Y
Y	U	F	R	R	E	P	P	I	L	F	L	O	H
W	D	L	T	A	X	I	P	U	A	D	A	D	A
T	M	I	E	D	M	H	A	Z	E	L	U	D	P
A	U	N	D	E	G	S	S	S	E	E	G	C	P
P	P	T	U	N	N	P	T	C	F	P	H	O	Y
S	P	S	A	E	I	H	A	E	N	N	I	U	D
R	E	T	M	A	L	I	C	E	G	N	N	P	A
E	T	O	B	E	W	I	T	C	H	E	D	L	Y
T	S	N	S	G	R	E	E	N	A	C	R	E	S
S	H	E	A	E	C	O	W	H	E	H	P	U	E
N	O	S	T	I	P	S	K	O	M	I	E	L	B
U	W	H	M	H	I	E	R	C	H	I	P	S	N
M	P	R	A	O	R	D	P	P	O	O	R	T	F

- WKRP
- MAUDE
- BEWITCHED
- CHIPS
- FLINTSTONES
- GREEN ACRES
- HAZEL
- LAUGH IN
- MUNSTERS
- ODD COUPLE
- HAPPY DAYS
- LOVE BOAT
- TAXI
- MUPPET SHOW
- ALICE
- GET SMART
- F TROOP
- FLIPPER

Please contact the Chapter Secretary [tmrc.daylight1145@gmail.com](mailto:tmrc.daylight1145@gmail.com) if you have a change of phone number or address.

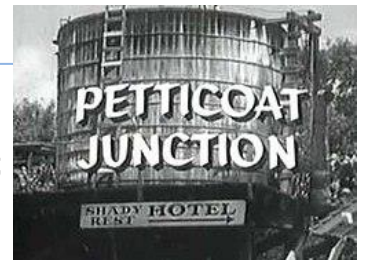


Find 9 Differences!



**REMEMBER WHEN -**

**Petticoat Junction** is an American sitcom that originally aired on CBS from September 1963 to April 1970. The series takes place at the Shady Rest Hotel, which is run by Kate Bradley; her three daughters Billie Jo, Bobbie Jo, and Betty Jo; and her uncle Joe Carson. The series is one of three interrelated shows about rural characters produced by Paul Henning.



Petticoat Junction was created upon the success of Henning's previous rural/urban-themed sitcom **The Beverly Hillbillies** (1962–1971).

**The Beverly Hillbillies** is an American television sitcom that was broadcast on CBS from 1962 to 1971. It had an ensemble cast featuring Buddy Ebsen, Irene Ryan, Donna Douglas, and Max Baer Jr. as the Clampetts, a poor, backwoods family from the hills of the Ozarks, who move to posh Beverly Hills, California, after striking oil on their land.



The success of Petticoat Junction led to a spin-off, **Green Acres** (1965–1971). **Green Acres** is about Oliver Wendell Douglas (Eddie Albert), a prominent and wealthy New York City attorney, fulfilling his dream to be a farmer, and Lisa Douglas (Eva Gabor), his glamorous Hungarian wife, uprooted unwillingly from an upscale Manhattan penthouse apartment to a defunct farm in Hooterville that Oliver purchases to the disbelief of nearby farmers.



To:

**Free Masks**

Lavelle Ford and Barbara Spencer are still making masks. Masks are free to all members and to all TMRC residents and staff.

Barbara: [barbs1145@hotmail.com](mailto:barbs1145@hotmail.com)

Lavelle: [lavelle.ford@gmail.com](mailto:lavelle.ford@gmail.com)