



WM Jean James
WP Floyd Hall



March



March Birthdays

- 19 Juanita Swafford
- 23 Mary Brejot
- 27 Kay Addy
- 28 Marian Von Heeder
- 31 Jill Keefer



March's Birthstones

March has two birthstones, not unlike some of other months. Aquamarine is the first birthstone for the month, which symbolizes youth, health, and hope. Bloodstone, which looks very different from aquamarine, is a type of quartz known for its fiery flecks of red, representing strength and stealth.

Please contact the Chapter Secretary tmrc.daylight1145@gmail.com if you have a change of phone number or address.

Grab a pencil and piece of paper. How many words can you make using the letters in "Vernal Equinox" We found 80!



Remember When Fallout Shelters Were A Legitimate Concern

Although World War II had ended, it wasn't long before the United States was involved in the Cold War. This was a time of heightened fear of the Soviet Union and the use of atomic and even hydrogen bombs. Starting at the end of the 1940s and throughout the 1950s, fear of nuclear war, families all over the country began creating fallout shelters of their own in case of such an attack. These fallout shelters even began to be advertised and turned into an actual market for those who feared for the worst. The government had even announced that it would be the best way for families in suburban areas to survive in the case of an attack. In the U.S. in September 1961, under the direction of Stuart L. Pittman, the federal government started the Community Fallout Shelter Program. A letter from President Kennedy advising the use of fallout shelters appeared in the September 1961 issue of Life magazine. Over the period 1961-1963, there was a growth in home fallout shelter sales,



JUMBLE

Unscramble these four Jumbles, one letter to each square, to form four ordinary words.

ALQUI
 EMAHR
 THARRE
 ERAUSS



WHAT THE BROKEN PHONOGRAPH RECORD MUST HAVE BEEN.

Now arrange the circled letters to form the surprise answer, as suggested by the above cartoon.

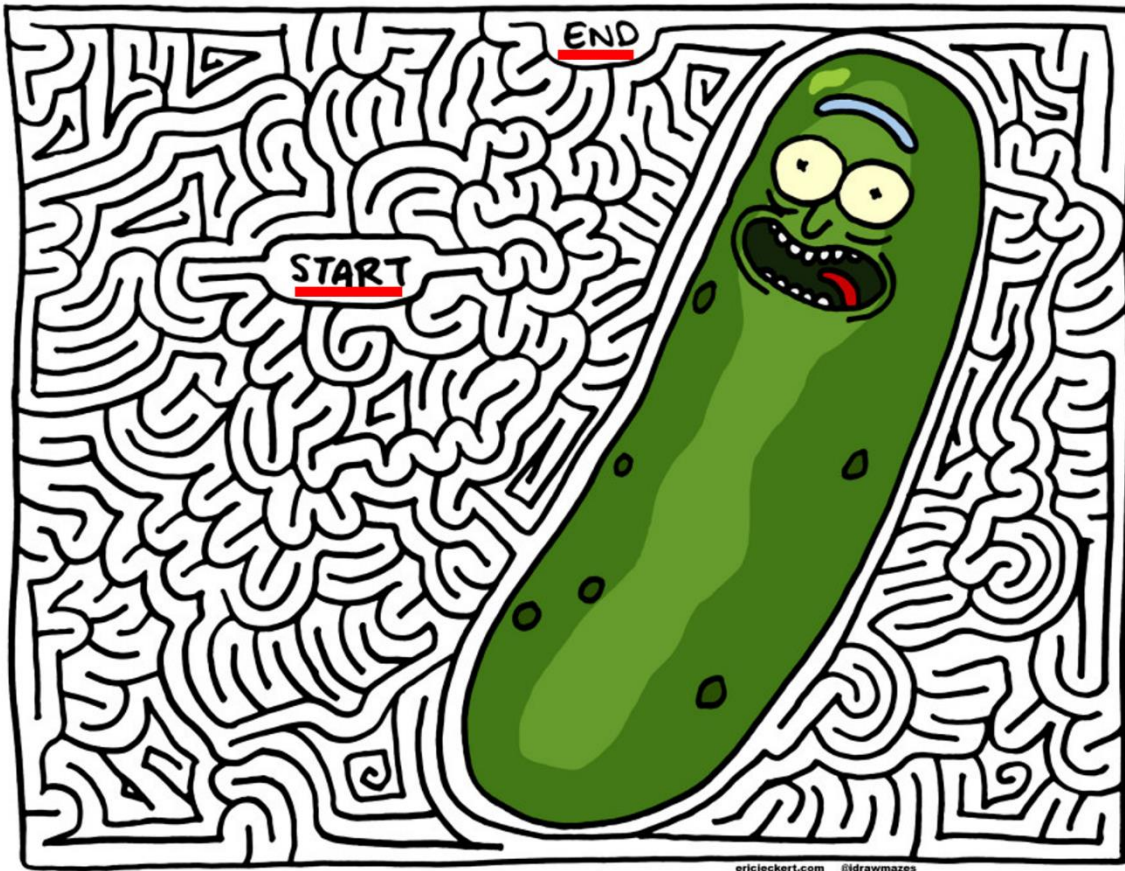
Print answer here A

TEXAS PORTS

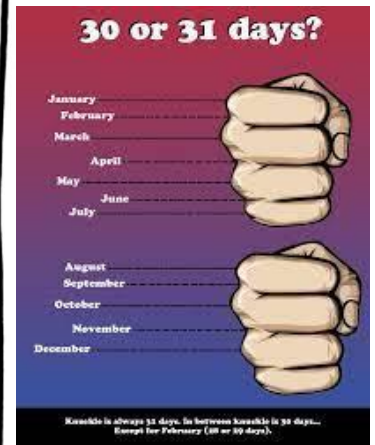
H	P	T	I	T	A	A	M	R	E	T	A	O	T
S	O	E	A	O	E	C	U	R	L	I	I	E	R
T	R	X	H	N	A	I	E	N	L	G	P	N	O
R	T	A	N	O	L	O	R	O	I	H	A	E	P
U	I	S	O	E	R	R	C	T	V	L	L	Y	E
H	S	C	R	E	G	E	C	S	S	U	A	T	E
T	A	I	A	Y	O	N	Y	E	N	L	C	I	R
R	B	T	N	I	O	C	I	V	W	E	I	C	F
A	E	Y	G	A	L	S	B	L	O	O	O	Y	C
T	L	T	E	R	C	S	I	A	R	O	S	A	A
R	N	O	T	S	U	O	H	G	B	A	N	B	I
O	B	A	I	R	O	T	C	I	V	I	H	O	A
P	C	O	R	P	U	S	C	H	R	I	S	T	I
T	O	B	N	M	B	E	A	U	M	O	N	T	N

(PORT OF)

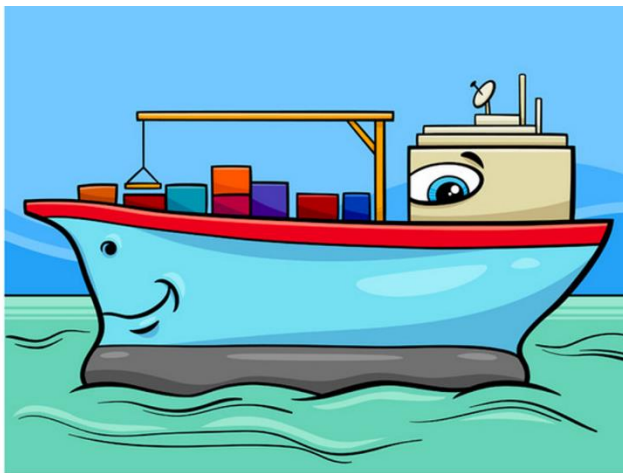
- VICTORIA
- BROWNSVILLE
- CORPUS CHRISTI
- HARLINGEN
- HOUSTON
- BEAUMONT
- PORT ARTHUR
- ORANGE
- PALACIOS
- BAY CITY
- TEXAS CITY
- FREEPORT
- PORT ISABEL
- GALVESTON



ericjeckert.com @idrawmazes



Thirty days has September,
 April, June, and November,
 All the rest have thirty-one,
 But February's twenty-eight,
 The leap year, which comes
 once in four,
 Gives February one day
 more.



F
I
N
D

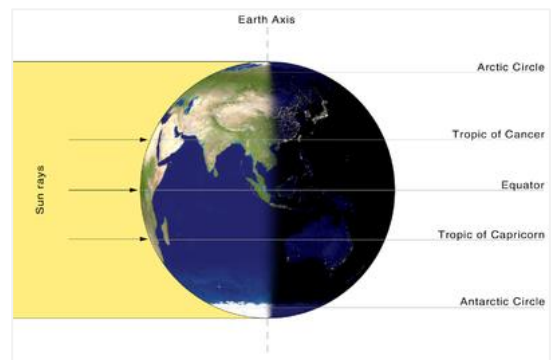
5

D
I
F
F
E
R
E
N
C
E
S

Jumble answers: QVAL, HAREM, RATHER, ASSURE -
 LTH HSMS

The March equinox is called the vernal or spring equinox. This happens on a day when the duration of the day and the night are practically equal and the word "equinox" comes from Latin *aequus*, meaning "equal", and *nox*, meaning "night".

An equinox is defined as the time when the plane of Earth's equator passes through the geometric center of the Sun's disk. This occurs twice each year, around 20 March and 23 September. In other words, it is the moment at which the center of the visible Sun is directly above the equator.





Containerization is a system of intermodal freight transport using intermodal containers (also called shipping containers and ISO containers). Containerization is the predominant form of unitization of export cargoes unlike other systems viz the barge system or the palletization. The containers have standardized dimensions. They can be loaded and unloaded, stacked, transported efficiently over long distances, and transferred from one mode of transport to another—container ships, rail transport flatcars, and semi-trailer trucks—without being opened. The handling system is completely mechanized so that all handling is done with cranes and special forklift trucks. All containers are numbered and tracked using computerized systems.

Containerization eliminated manual sorting of most shipments and the need for dock-front warehouses. It displaced many thousands of dock workers who formerly handled break bulk cargo. Containerization reduced congestion in ports, significantly shortened shipping time and reduced losses from damage and theft.

Intermodal containers exist in many types and a number of standardized sizes, but ninety percent of the global container fleet are so-called "dry freight" or "general purpose" containers – durable closed rectangular boxes, made of rust-retardant Corten steel; almost all 8 feet (2.44 m) wide, and of either 20 or 40 feet (6.10 or 12.19 m) standard length, as defined by International Organization for Standardization (ISO) standard 668:2020. The worldwide standard heights are 8 feet 6 inches (2.59 m) and 9 feet 6 inches (2.90 m) – the latter are known as High Cube or Hi-Cube (HC / HQ) containers.

Each container is allocated a standardized ISO 6346 reporting mark (ownership code), four letters long ending in either U, J or Z, followed by six digits and a check digit.

ISO 6346 is an international standard covering the coding, identification and marking of intermodal (shipping) containers used within containerized intermodal freight transport. The standard establishes a visual identification system for every container that includes a unique serial number (with check digit), the owner, a country code, a size, type and equipment category as well as any operational marks.

Equipment category identifier

The equipment category identifier consists of one of the following capital letters of the Latin alphabet:

- U for all freight containers
- J for detachable freight container-related equipment
- Z for trailers and chassis

Presently, all official BIC container codes end in "U". However, the Association of American Railroads recognizes similar codes for their containers and trailers travelling by rail in North America, however these are not recognized by the BIC and lack check digits.

Under the ISO code, then, only U, J, and Z are in use. The refrigerated (reefer) container is identified by means of the size type code.

Serial number

The serial number consists of 6 numeric digits, assigned by the owner or operator, uniquely identifying the container within that owner/operator's fleet.

Check digit

The check digit consists of one numeric digit providing a means of validating the recording and transmission accuracy of the owner code and serial number.

